



HydroTap G5 BCS Elite Plus Brushed Gunmetal

Boiling Chilled Sparkling



Finish: Brushed Gunmetal

Product code: H5E783Z19AU

Capacity: Residential

Zip HydroTap Design Range Boiling, Chilled, Sparkling, Filtered water tap features a single under bench command centre including full colour interactive touch screen display with pin code protection and customisable settings including boiling water safety mode, 2 energy saving modes including ON/OFF timers and 2 hour sleep mode, 'Quiet' mode with automated intelligent fan speed adjustment, antimicrobial protection impregnated into key water paths for enhanced hygiene, 100% water efficient air cooled technology, 0.2 micron water filtration, and 2 disposable CO2 cylinders.

Specifications

| | |
|---------------------|---|
| Product name | HydroTap G5 BCS Elite Plus Brushed Gunmetal |
| Product code | H5E783Z19AU |
| Filtered water type | BCS |
| Product approvals | WaterMark, RCM, ARC |
| Warranty | 3-years comprehensive parts and labour or 5-years with a Zip Certified Installation |
| Chilling Technology | Air cooled technology making it 100% water efficient |

Plumbing

| | |
|---------------------------|--|
| Water supply requirements | Cold |
| Water connection | 1/2" BSP (G1/2) |
| Water valves | Integrated 500kPa Pressure limiting valve and Dual Check Valve |
| Water pressure | Min 250kPa - Max 700kPa |

Electrical

| | |
|--------------|--------------------------|
| Power rating | 1.53kW 220-240V 50Hz |
| Power supply | 1 × 10 Amp socket outlet |

Tap design

| | |
|--------------------|---|
| Tap | Zip HydroTap Design Range ELITE PLUS Tap (Brushed Gunmetal) |
| HydroTap style | Elite Plus |
| Finish | Brushed Gunmetal |
| Disability options | Unavailable |

Command centre

| | |
|------------|--------------------------|
| Dimensions | W339mm x D483mm x H333mm |
|------------|--------------------------|

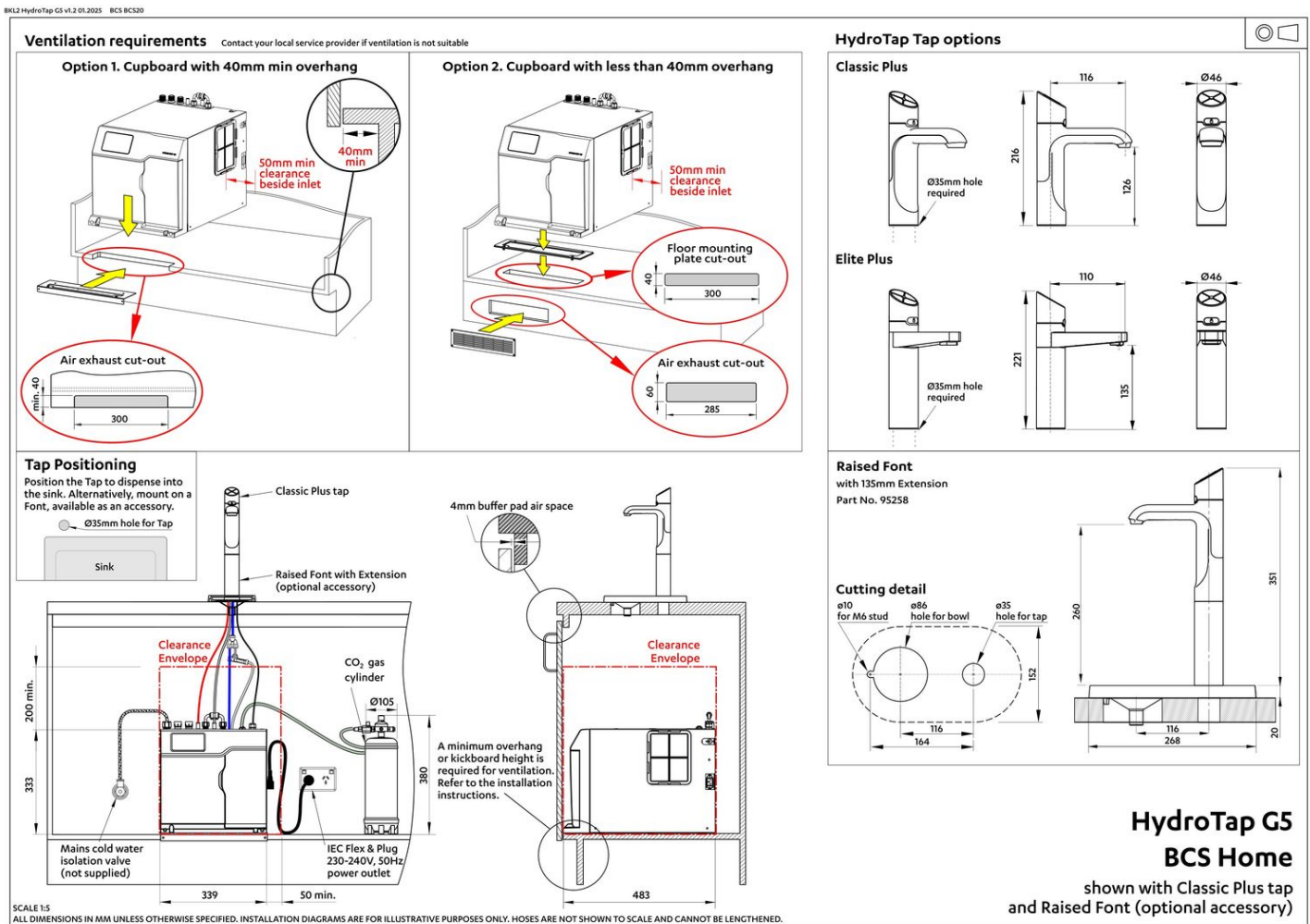
Installation

Installation requirements

1. Installation and connection of your Zip HydroTap must be carried out by a Zip Certified service technician, observing national and local regulations.
2. You will require suitable mains electrical and drinking water connections, plus waste water drainage all within 1 metre of the product.
3. Zip HydroTap is air-cooled so discrete cabinetry cut-outs are required for ventilation.
4. Installation on most bench tops is straightforward however some stone bench tops may require a specialised cutting service.
5. Installation by Zip Professional Service can be arranged with a phone call or through www.zipwater.com/book-service-visit

Files

Installation Layout 3D (DWG)



Installation Layout (PDF)

BIM files



↓ ArchiCAD Swift
Globals Library
(LCF)



↓ ArchiCAD Zip Water
Library (IFC)



↓ Revit Virtual
Showroom (RVT)

↓ Download all

Certifications



OHS
ISO 45001



Environment
ISO 14001



Quality
ISO 9001



↓ Health & Safety
(PDF)



↓ Environment ISO
(PDF)



↓ Quality ISO (PDF)



↓ Environmental
Product Declaration
Brochure (PDF)



↓ ARC (PDF)



↓ Filter performance
(PDF)



↓ HydroTap Clean
SDS (PDF)

Manuals & brochures



↓ Brochure (PDF)



↓ CO₂ MSDS (PDF)



↓ Instruction manual (PDF)



↓ Quick guide (PDF)



↓ Tap operation label (PDF)



↓ User manual (PDF)

↓ Download all

Accessories



95258Z1902

Font Kit Raised Brushed Gunmetal



90915Z1902

Font Kit Brushed Gunmetal