




## HydroTap G5 BC Classic Plus Brushed Bronze

Boiling Chilled

 **Finish:** Brushed Bronze

**Product code:** H55784Z15AU

**Capacity:** Residential

Zip HydroTap Classic Plus Boiling, Chilled, Filtered water tap features simple, intuitive controls including continuous flow to fill bottles, Boiling water safety lock, and antimicrobial protection impregnated within the new Classic Plus touch-pad for enhanced hygiene. The water system features a single under bench command centre including full colour interactive touch screen display with pin code protection and customisable settings including 2 boiling water safety modes, 3 energy saving modes including ON/OFF timers and sensor activated 'sleep when it's dark', 'Quiet' mode with automated intelligent fan speed adjustment, antimicrobial protection impregnated into key water paths for enhanced hygiene, 100% water efficient air cooled technology, and 0.2 micron water filtration.

# Specifications

Product name	HydroTap G5 BC Classic Plus Brushed Bronze
Product code	H55784Z15AU
Filtered water type	BC
Product approvals	WaterMark, RCM, ARC
Warranty	3-years comprehensive parts and labour or 5-years with a Zip Certified Installation
Chilling Technology	Air cooled technology making it 100% water efficient

# Plumbing

Water supply requirements	Cold
Water connection	1/2" BSP (G1/2)
Water valves	Integrated 500kPa Pressure limiting valve and Dual Check Valve
Water pressure	Min 170kPa - Max 700kPa

# Electrical

Power rating	1.44kW 220-240V 50Hz
Power supply	1 × 10 Amp socket outlet

# Tap design

Tap	Zip HydroTap CLASSIC PLUS Tap (Brushed Bronze)
HydroTap style	Classic Plus
Finish	Brushed Bronze
Disability options	Unavailable

# Command centre

Dimensions	W280mm x D478mm x H333mm
------------	--------------------------

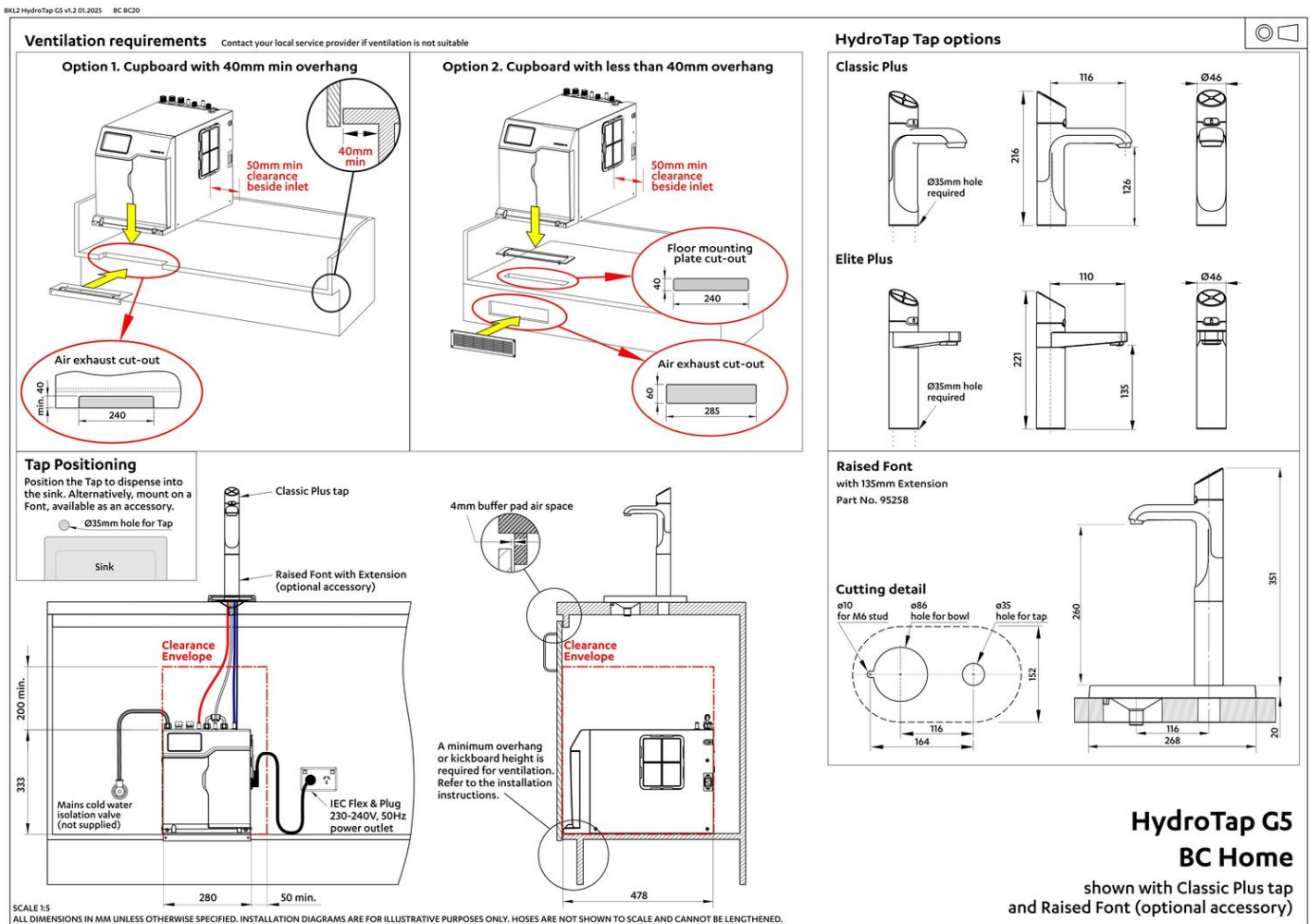
# Installation

## Installation requirements

1. Installation and connection of your Zip HydroTap must be carried out by a Zip Certified service technician, observing national and local regulations.
2. You will require suitable mains electrical and drinking water connections, plus waste water drainage all within 1 metre of the product.
3. Zip HydroTap is air-cooled so discrete cabinetry cut-outs are required for ventilation.
4. Installation on most bench tops is straightforward however some stone bench tops may require a specialised cutting service.
5. Installation by Zip Professional Service can be arranged with a phone call or through [www.zipwater.com/book-service-visit](http://www.zipwater.com/book-service-visit)

## Files

Installation Layout 3D (DWG)



Installation Layout (PDF)

# BIM files



↓ ArchiCAD Swift  
Globals Library  
(LCF)



↓ ArchiCAD Zip Water  
Library (LCF)



↓ Revit Virtual  
Showroom (RVT)

↓ Download all

# Certifications



OHS  
ISO 45001



Environment  
ISO 14001



Quality  
ISO 9001



↓ Health & Safety  
(PDF)



↓ Environment ISO  
(PDF)



↓ Quality ISO (PDF)



↓ Environmental  
Product Declaration  
Brochure (PDF)



↓ ARC (PDF)



↓ Filter performance  
(PDF)



↓ HydroTap Clean  
SDS (PDF)

# Manuals & brochures



↓ Brochure (PDF)



↓ Instruction manual (PDF)



↓ Quick guide (PDF)



↓ Tap operation label (PDF)



↓ User manual (PDF)

↓ Download all

# Accessories



95258Z1502

Font Kit Raised Brushed Bronze



90915Z1502

Font Kit Brushed Bronze