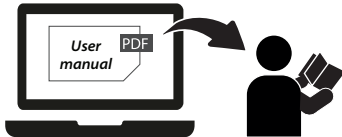


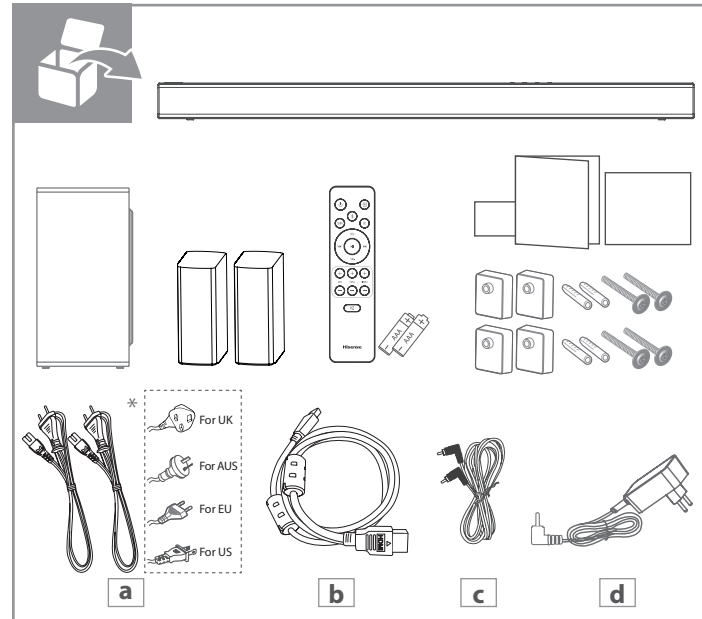
# Hisense

## AX5100Q

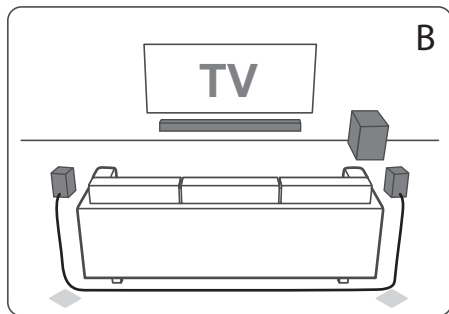
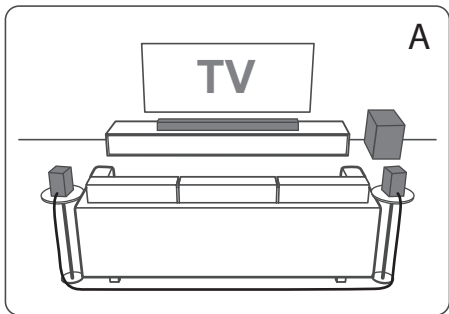
### QUICK START MANUAL



- EN** Power cord quantity and plug type vary by regions.  
For other source connections /detailed operation, please refer to Complete UM on web.
- FR** Le nombre de cordons d'alimentation fournis et le type de prise varient selon les régions.  
Pour d'autres connexions de sources ou le fonctionnement détaillé, veuillez vous référer au manuel de l'utilisateur sur le Web.
- DE** Netzkabel und Steckertyp variieren je nach Region.  
Für andere Anschlüsse von Quellen und eine detaillierte Beschreibung der Bedienung lesen Sie bitte die vollständige Bedienungsanleitung im Internet.
- IT** La lunghezza del cavo di alimentazione ed il tipo di spina variano in base alla regione.  
Per la connessione di altre sorgenti/dettagli sull'utilizzo, fare riferimento al manuale completo sul web.
- ES** La cantidad de cable de alimentación y el tipo de enchufe varían según la región.  
Para la conexión de otras fuentes/operación detallada, consulte el MU Completo en la web.
- SL** Število napajalnih kablov in priključki so odvisni od regije.  
V popolnem spletnem priručniku za uporabo so navodila za povezave do drugih virov ter podrobnosti o delovanju/uporabi.
- HR** Količina kabela za napajanje i vrsta utikača razlikuju se po regijama.  
Za povezivanje na druge izvore / detaljne informacije o radu pogledajte cijeli korisnički priručnik na mreži.
- CZ** Počet napájecích kabelů a typ zástrčky se liší podle regionu.  
Připojení k jiným zdrojům nebo podrobné informace o používání najdete v kompletní uživatelské příručce na webu.
- SK** Dĺžka napájacieho kábla a typ zástrčky sa líšia v závislosti od regiónu.  
Pripojenia k iným zdrojom/podrobné informácie o obsluhu nájdete v Kompletnej používateľskej príručke na webe.
- HU** Az áramkábel hossza és a dugvilla típusa régióként eltérő.  
Más forrásokhoz való csatlakozáshoz/részletezett kezeléshez tekintse meg a teljes felhasználói kézikönyvet az Interneten.
- PT** A quantidade de cabo de alimentação e o tipo de ficha variam de acordo com a região.  
Para outras ligações de entradas/função detalhada, consulte o MU Completo na Internet.
- RO** Cantitatea de cabluri de alimentare și tipul de stecher variază în funcție de regiune.  
Pentru conectarea la alte surse/funcționarea detaliată, vă rugăm să consultați manualul complet de utilizare disponibil online.
- PL** Liczba kabli zasilających i wtyczek zależy od regionu.  
Informacje na temat połączeń z innymi źródłami lub szczegółowej obsługi można znaleźć w pełnej instrukcji obsługi dostępnej w Internecie.
- RU** Количество шнуров питания и тип вилки зависит от региона.  
Информацию о подключении других источников / подробное описание работы см. в полном руководстве пользователя в Интернете.
- SR** Broj strujnih kablova i vrste utikača variraju u zavisnosti od regiona.  
Za druga povezivanja izvora / detaljni rad, pogledajte kompletno korisničko uputstvo na internetu.
- MK** Должината на електричниот кабел и типот на приклучок се разликуваат според регионите.  
За други поврзувања на изворот / детални операции, погледнете го целосното КУ на веб.
- SQ** Sasia e kordonit elektrik dhe lloji i spinës ndryshojnë sipas rajoneve.  
Për lidhje të tjera të burimit / funksionim të detajuar, referohuni te ""Manuali i plotë i përdoruesit në ueb.
- BS** Količina napojnog kabela i utikač razlikuju se u zavisnosti od regiona.  
Za spajanje drugih izvora / detaljne podatke o radu pogledajte čitav priručnik na mreži.
- DK** Mængden af netledninger og stiktyper varierer fra region til region. For andre kildeforbindelser/detaljeret betjening henvises til Complete UM på webben.

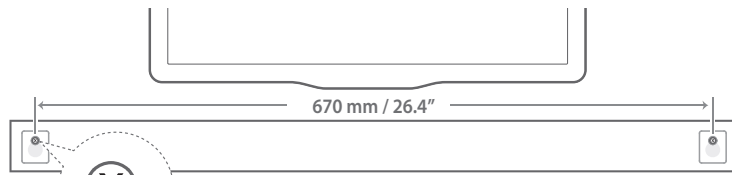


- SE** Antalet nätsladdar och kontakttyp varierar beroende på region. För andra anslutningar/detaljerad användning, se Complete UM på webben.
- FI** Virtajohtojen määrä ja pistoketyypit vaihtelevat alueittain. Muiden lähteiden liittänyt / yksityiskohtainen toiminta on esitetty Täydellisessä käyttöoppaassa verkossa.
- NO** Antall strømkabler og pluggtype varierer fra region til region. For andre kildetilkoblinger/detaljert operasjon, se Fullfør UM på web.
- IS** Magn rafmagnssnúra og gerð innstunga er mismunandi eftir svæðum. Fyrir aðrar upprunategningar / ítarlegar aðgerðir, vinsamlegast skoðaðu Complete UM á vefnum.
- GR** Ο αριθμός των καλωδίων ρεύματος και ο τύπος του φις διαφέρουν ανάλογα με την περιοχή. Για άλλες συνδέσεις πηγής / λεπτομερή λειτουργία, ανατρέξτε στο Πλήρες εγχειρίδιο χρήσης στο διαδίκτυο
- BG** Количеството захранващи кабели и типът на щепсела са различни в различните региони. За други връзки на източника / подробни указания за експлоатация, моля, направете справка с Пълното ръководство на потребителя в интернет.
- KZ** Қуат сымнының саны мен аша түрі аймақтарға байланысты ерекшеленеді. Басқа бастапқы қосылымдарды / толық пайдалану жағдайларын интернеттегі UM толық нұсқасынан қараңыз."

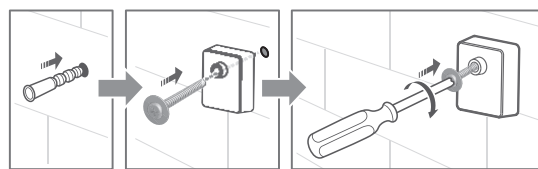


**B1**

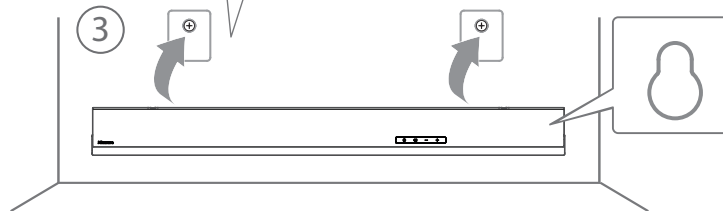
①



②

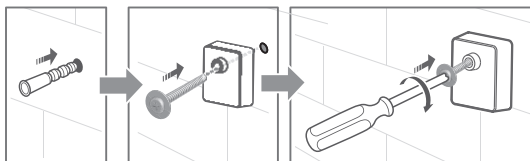


③

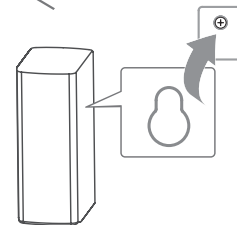


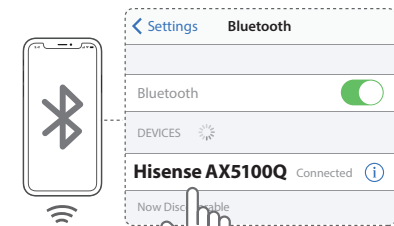
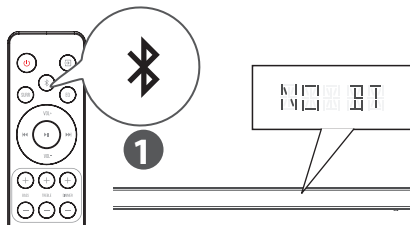
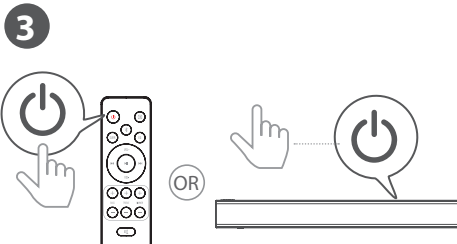
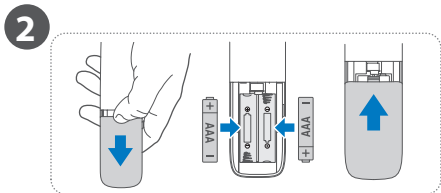
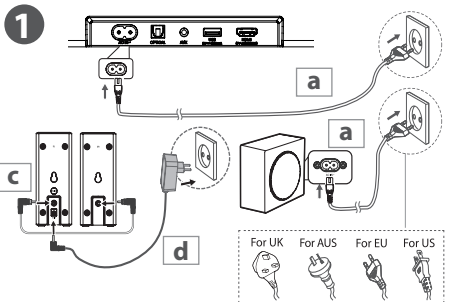
**B2**

①

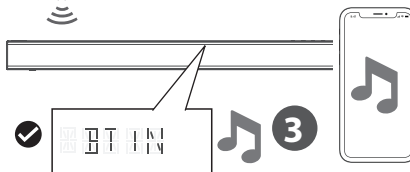


②

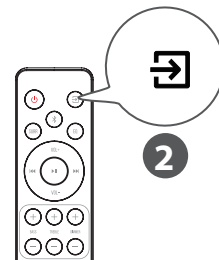
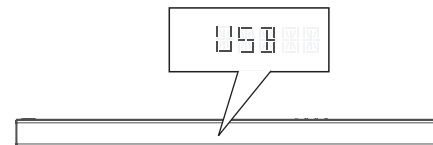
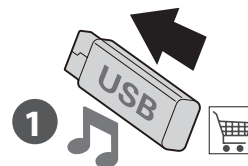




< 8 m / 26.3 ft

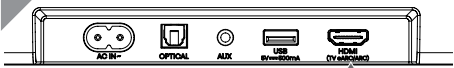


USB



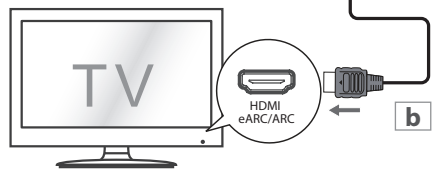


### TV (HDMI eARC or HDMI ARC)



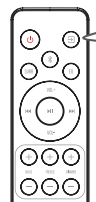
1

HDMI (TV eARC/ARC)

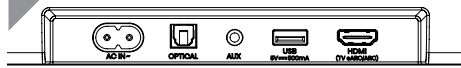


OR  
ARC  
eARC

2



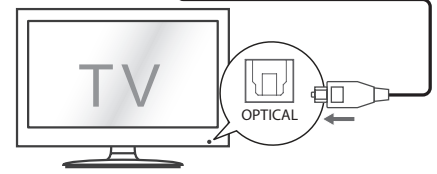
### TV (OPTICAL)



1

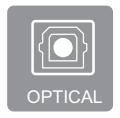


OPTICAL



OPT

2

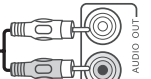


### TV (AUX)

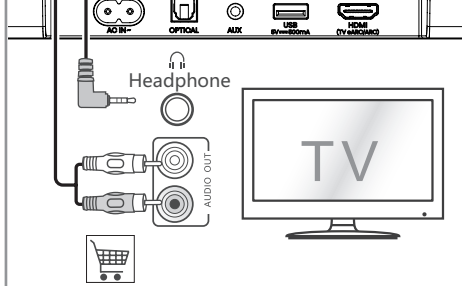


1

Headphone



AUDIO OUT



AUX

2





The Bluetooth® word mark and logos are registered trademarks owned by Bluetooth SIG, Inc. and any use of such marks by Hisense is under license. Other trademarks and trade names are those of their respective owners.



The terms HDMI, HDMI High-Definition Multimedia Interface, HDMI trade dress and the HDMI Logos are trademarks or registered trademarks of HDMI Licensing Administrator, Inc.



Dolby, Dolby Atmos, and the double-D symbol are registered trademarks of Dolby Laboratories Licensing Corporation. Manufactured under license from Dolby Laboratories. Confidential unpublished works. Copyright © 2012-2024 Dolby Laboratories. All rights reserved.



FOR DTS PATENTS, SEE [HTTP://XPERI.COM/DTS-PATENTS/](http://xperi.com/dts-patents/). MANUFACTURED UNDER LICENSE FROM DTS, INC. AND ITS AFFILIATES. DTS, DTS:X, THE DTS:X LOGO, VIRTUAL:X, AND THE DTS VIRTUAL:X LOGO ARE REGISTERED TRADEMARKS OR TRADEMARKS OF DTS, INC. AND ITS AFFILIATES IN THE UNITED STATES AND/OR OTHER COUNTRIES. © DTS, INC. AND ITS AFFILIATES. ALL RIGHTS RESERVED.



**If you have a Roku TV™, simply plug in the HDMI cable to the ARC ports and follow the Roku TV Ready™ on-screen instructions.**

Roku, the Roku logo, Roku TV, Roku TV Ready, and the Roku TV Ready logo are trademarks and/or registered trademarks of Roku, Inc. This product is Roku TV Ready-supported in the United States, Canada, United Kingdom and Mexico. Countries are subject to change. For the most current list of countries in which this product is Roku TV Ready-supported, please email [rokutvready@roku.com](mailto:rokutvready@roku.com).



Séparez les éléments avant de trier

## EU Declaration of conformity (DoC)

Unique identification of this DoC: H-GJYX-20250120-001

We, Declare under our sole responsibility that the product:

Product Name: Soundbar

Trade Name: Hisense

Model: AX5100Q

**To which this declaration relates is in conformity with the essential requirements and other relevant requirements of the radio equipment directive (2014/53/EU), Eco design Directive (2009/125/EC) & Regulation 2023/826/EU, RoHS Directive (2011/65/EU).**

**The product is in conformity with the following standards and /or other normative documents:**

**Health & Safety (Art. 3(1)(a)): EN 62479:2010**

**IEC 62368-1:2018 EN IEC 62368-1:2020+A11:2020**

**EMC (Art. 3(1)(b)): EN 55032:2015+A1:2020 / EN 55032:2015+A11:2020;**

**EN 55035:2017+A11:2020**

**EN 61000-3-3:2013 +A1:2019 EN 61000-3-3:2013+A2:2021**

**EN 301489-1 V2.2.3: 2019-11 EN 301489-3 V2.3.2:2023-01**

**EN 301489-17 V3.2.6:2023-06**

**Spectrum (Art. 3(2)): EN 300328 V2.2.2:2019-07 EN 300440 V2.2.1:2018-07**

**ErP: EN 50564:2011 2023/826/EU**

**RoHS : International Standards IEC 62321-1: 2013 and IEC 62321-2: 2021**

**IEC 62321-3-1: 2013**

**IEC 62321-5: 2013**

**IEC 62321-4: 2013+AMD1:2017**

**IEC 62321-7-2: 2017**

**IEC 62321-7-1: 2015**

**IEC 62321-6: 2015**

**Place and date of issue (of this DoC): Hong Kong, China 2025-1-20**

**Signed by or for the manufacturer: XinYang (Hong Kong) Co., Ltd**

**Address: Room3101-05, Singga Commercial Centre.No.148 Connaught Road West, Hong Kong, China**

**Title: Quality & Compliance Management Manager**

**Name (in print): Jack Zhao**

**Signature: Jack Zhao**

