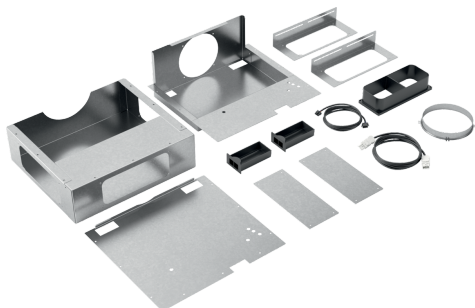


## installation accessory DSZ1WW1M1



- includes necessary installation parts to install the motor up to 3 m away from the ventilation unit

---

Dimensions of the packed product (HxWxD): ..... 335 x 455 x 670 mm  
Pallet dimensions: ..... 200.0 x 80.0 x 120.0  
Standard number of units per pallet: ..... 12  
Net weight: .....6.1 kg  
Gross weight: ..... 8.7 kg  
EAN code: .....4242005241651

---



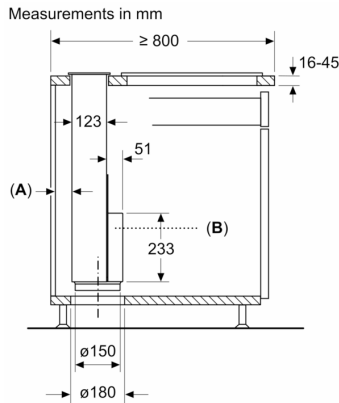
  
**installation accessory**  
**DSZ1WW1M1**

---

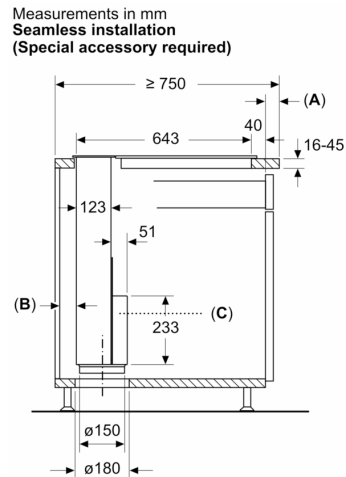
**Optional accessories**

- includes necessary installation parts to install the motor up to 3 m away from the ventilation unit

## installation accessory DSZ1WW1M1

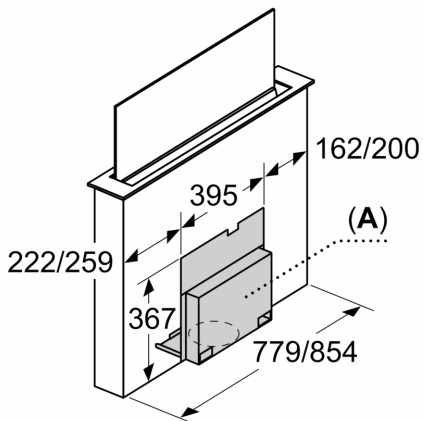


A:  $\geq 20$  mm between the Guided Air suction area and a cabinet wall  
B: Cover must always be accessible



A: Worktop overhang protruding beyond unit carcass  
B:  $\geq 20$  mm between the Guided Air suction area and a cabinet wall  
C: Cover must always be accessible

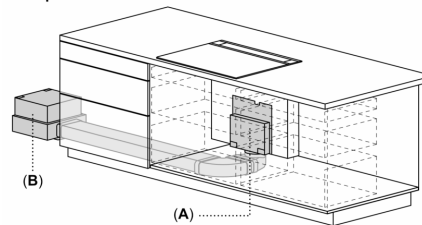
measurements in mm



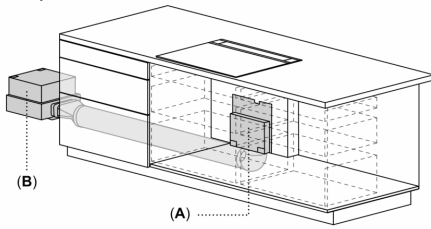
A: Access to the entire cover must be ensured even after installation.

The cover can be installed on the front or rear of the appliance.

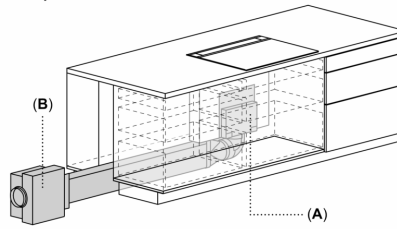
Example



A: Cover must always be accessible  
B: Clearance between motor unit and appliance max. 3 mm  
Motor unit must always be accessible

**Example**


- A:** Cover must always be accessible  
**B:** Clearance between motor unit and appliance max. 3 m  
 Motor unit must always be accessible

**Example**


- A:** Cover must always be accessible  
**B:** Clearance between motor unit and appliance max. 3 m  
 Motor unit must always be accessible

**Measurements in mm**
