

PHILIPS



Wet&Dry Electric
Shaver with SkinIQ

i9000 Prestige

Triple Action Lift & Cut
Technology

Dual Steel Precision Blades

360° Precision Flexing Head

Pressure Guard Sensor



XP9202/33

Long-lasting close shave, intelligent skin comfort with SkinIQ Technology

Philips i9000 Prestige, with Triple Action Lift&Cut shaving system and 360° Precision Flexing compact head cuts hair at skin-level, even in hard-to-shave-areas. Powered by AI, SkinIQ senses, guides and adapts for intelligent skin comfort.

Shaving performance

- Skin-level closeness, long-lasting results
- Efficient in every pass, even on a 1, 3 or 7-day beard
- Precision, even in hardest-to-shave areas

Convenience

- Deep cleaning in 1 minute for hygienic shave
- Ultimate precision trim & style in one pass
- Effortless charging with convenient stand available at hand
- Trim your mustache and sideburns
- Shave as you want: refreshing wet, dry or with foam
- One-touch open for easy cleaning
- Convenient charging

Premium experience

- Built to last longer: 5 years warranty****

Skin comfort (Skin IQ)

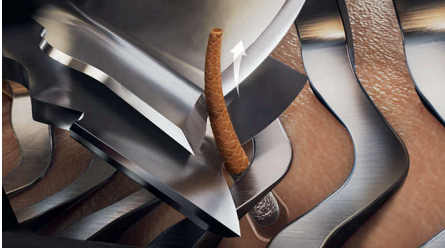
i9000 Prestige

Wet&Dry Electric Shaver with SkinIQ

XP9202/33

Highlights

Triple Action Lift&Cut System



Our patented Triple Action Lift & Cut shaving system lifts the hair gently from its root to cut it precisely up to 0.00mm skin-level, without cutting skin for long-lasting closeness.

360° Precision Flexing Head



Fully flexible and smaller, compact heads with skin stretching patterns dynamically adapt to every curve of your face. For constant skin contact with 20% more precision* to catch difficult hairs on the neck and under the nose. Precision everywhere.

Dual SteelPrecision Blades



Our 360° rotating Dual SteelPrecision blades catch hair growing in different directions. With 7 million cutting motions per minute, for efficient shave even on a 1, 3 or 7-day beard.

Pressure Guard Sensor



Powered by AI, our Pressure Guard system reads the pressure you apply and provides real-time feedback through lights, aiding you in adjusting the right pressure for optimal skin comfort. For a personalised shave that is just right for you.

Hydro SkinGlide Coating



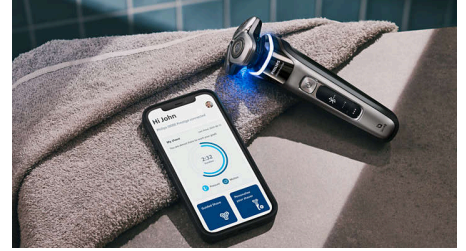
Our most advanced skin protection delivers 50% smoother gliding on the skin** with the hydrophilic coating holding up to 500,000 microtech beads per square centimeter. For less friction and maximum comfort.

Power Adapt Sensor



The shaver's intelligent sensor reads hair density 500 times a second and auto-adapts the cutting power for an effortless and gentle shave, even on a dense beard.

Improve efficiency with our app



Pair your shaver with our app for an ever-better routine and technique. Experience real-time guidance and personalized shaving insights to help you look and feel your best every day.

5 Years Warranty



Our shavers are designed for care and a long life. Our battery and motor are designed to last up to 5 years. Self-sharpening blades are made with the space-grade level stainless steel, and last 2 years between replacement.

Cable-free Quick Clean Pod



Our cleaning pod is 10 times more effective than water***, thoroughly cleaning and lubricating your shaver in one minute to keep your shaver like new. Compact and cable-free, the pod can be used and stored anywhere.

i9000 Prestige

Wet&Dry Electric Shaver with SkinIQ

XP9202/33

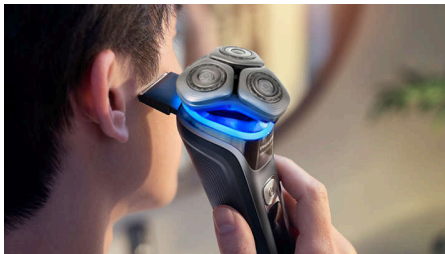
Highlights

5+1 Precision Beard Styler



Precision Beard Styler has 5 adjustable length settings (1mm to 5mm) for consistent and precise trimming, styling and edging, even the longest beard. Rounded space-grade steel tips prevent skin irritation.

Precision trimmer integrated



Skin-friendly and easy to use, give your mustache and sideburns extra definition with the integrated precision trimmer.

Charging Stand



Fully charge your shaver within 1 hour in the elegant stand. A stand created for both conveniently charging your device and neatly storing it away. In a hurry? Plug in your shaver for 5 minutes and get enough power for 1 full shave.

Wet & Dry



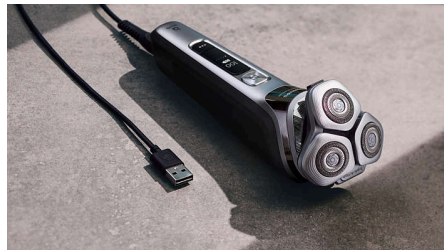
Adapt your shaving routines to your needs. Our shaver is 100% waterproof so you can choose a comfortable dry shave, or a refreshing wet shave. You can shave with gel or foam even under the shower.

One-touch open



Clean your electric shaver with the touch of a button. Simply flip open the shaver head and rinse with water.

USB-A Charging



At Philips, we drive sustainability in all aspects of product creation. Our ambition is to reduce waste and minimize the number of USB adaptors

we put in the market. Should you need an adapter, a suitable supply unit is available via: www.philips.com/support

Travel Pouch



The i9000 Prestige Shaver comes neatly packed in a travel case ideal for travel or keeping it safe when it's not in use.

Sustainability



All our i9000 shavers are made with high-quality long-lasting component and recyclable packaging, while our blades are produced in a factory that uses 100% renewable energy.

i9000 Prestige

Wet&Dry Electric Shaver with SkinIQ

XP9202/33

Specifications

Accessories

Charging stand

Attachments: Beard styler

Quick Clean Pod: Yes, 1 cartridge included

Integrated pop-up trimmer

Travel and storage: Travel Pouch

Software

App: GroomTribe, Connects via Bluetooth®

Smartphone compatibility: iPhone and

Android™ devices

Power

Run time: 60 minutes

Charging: 1 hour full charge, 5 min quick charge

Battery type: Li-ion

Design

Finishing: Timeless elegance

Color: Dark Slate

Handle: Ergonomic grip & handling

Service

5-year warranty

Replacement head: Replace every 2 yrs with

SH91

Shaving Performance

Contour following: 360° Precision Flexing Head

Shaving system: Triple Action Lift & Cut System, Dual Steel Precision blades

SkinIQ technology: Power Adapt sensor, Motion Control sensor, Pressure Guard sensor, Hydro SkinGlide Coating

Ease of use

Charging: USB-A Charging (5V⁻ / ≥1A)

Cleaning: One-touch open, Fully washable, Quick Clean Pod

Display: % Battery Level Indicator, Travel lock,

Connect to app, Advanced OLED display

Wet & Dry: Wet and dry use

