

**Series 6, integrated rangehood, 52 cm, Stainless steel  
DHL575CAU**



**Optional accessories**

DHZ5605 : Standard recirculation kit

**The integrated rangehood: offers a sleek and seamless design in the kitchen with fully integrated installation.**

- **LED lighting:** for perfect, energy-efficient illumination of the cooktop.
- **Intensive speed setting:** removes strong kitchen odours especially quickly and effectively.
- With exhaust, the air is cleaned by a grease filter and then ducted to the outside which ensures optimal kitchen air quality.
- Dishwasher-safe metal grease filters for easy cleaning.
- **Intensive speed setting with reset:** automatically resets the rangehood to normal speed setting

**Technical Data**

Typology : Built-in/Built-under

Length electrical supply cord : 150 cm

Min. required niche size for installation (HxWxD) : 418mm x 496.0mm x 264mm mm

Minimum distance above an electric cooktop : 500 mm

Minimum distance above a gas cooktop : 650 mm

Net weight : 7.9 kg

Type of control : Electronic

Number of power settings : 3-stages + intensive setting

Maximum output air extraction : 560 m<sup>3</sup>/h

Boost position output recirculating : 581 m<sup>3</sup>/h

Maximum output recirculating air : 533 m<sup>3</sup>/h

Boost position air extraction : 610 m<sup>3</sup>/h

Number of lights : 2

Noise level : 67 dB(A) re 1 pW

Diameter of air outlet : 150 / 120 mm

Grease filter material : Washable aluminium

EAN code : 4242005039876

Connection Rating : 252 W

Fuse protection : 3 A

Voltage : 230 V

Frequency : 50 Hz

Plug type : AU plug

Installation type : Built-in



4 242005 039876

**Series 6, integrated rangehood, 52 cm,  
Stainless steel  
DHL575CAU**

**The integrated rangehood: offers a sleek and seamless design in the kitchen with fully integrated installation.**

---

**Design & Innovation**

- Appliance colour: Stainless steel
- Accessory required for recirculation mode: Standard recirculation kit

**Power and Mode of Operation**

- 3 power settings plus intensive setting
- Extraction rate according to EN 61591  $\varnothing$  15 cm:  
max. Normal use 560 m<sup>3</sup>/h  
Intensive 610 m<sup>3</sup>/h
- Twin channel high performance fan motor
- Noise min./max. Normal Level: 50/67 dB

**Comfort & Convenience**

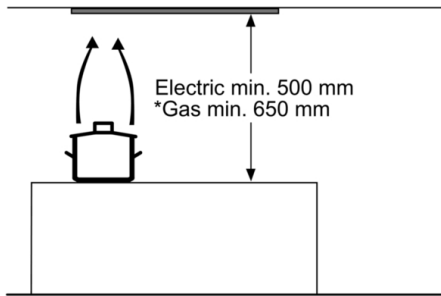
- Dishwasher safe metal grease filters
- Intensive operation automatic revert - 6min
- 2 x 1 Watt LED lights

**2 year warranty**

**Dimensions (HxWxD)**

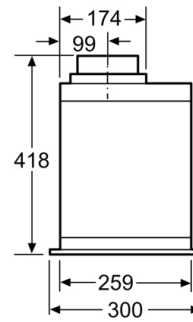
- Dimensions exhaust air (HxWxD): 418-418 x 520 x 300 mm
- Dimensions recirculating (HxWxD): 418-418 x 520 x 300 mm
- Built-in dimensions (HxWxD): 418 x 496 x 264 mm
- Diameter pipe  $\varnothing$  150 mm ( $\varnothing$  120 mm enclosed)
- Electrical cable length 1.5 m
- Noise level according to EN 60704-3 exhaust air:  
Max. normal use: 67 dB(A) re 1 pW  
Intensive: 70 dB(A) re 1 pW

**Series 6, integrated rangehood, 52 cm,  
Stainless steel  
DHL575CAU**

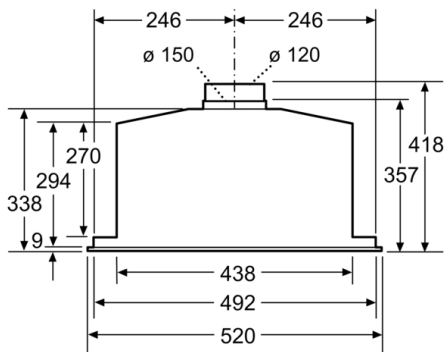


\* from upper edge of pan support

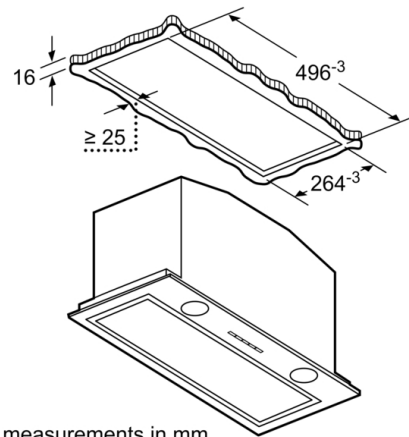
measurements in mm



measurements in mm



measurements in mm



measurements in mm