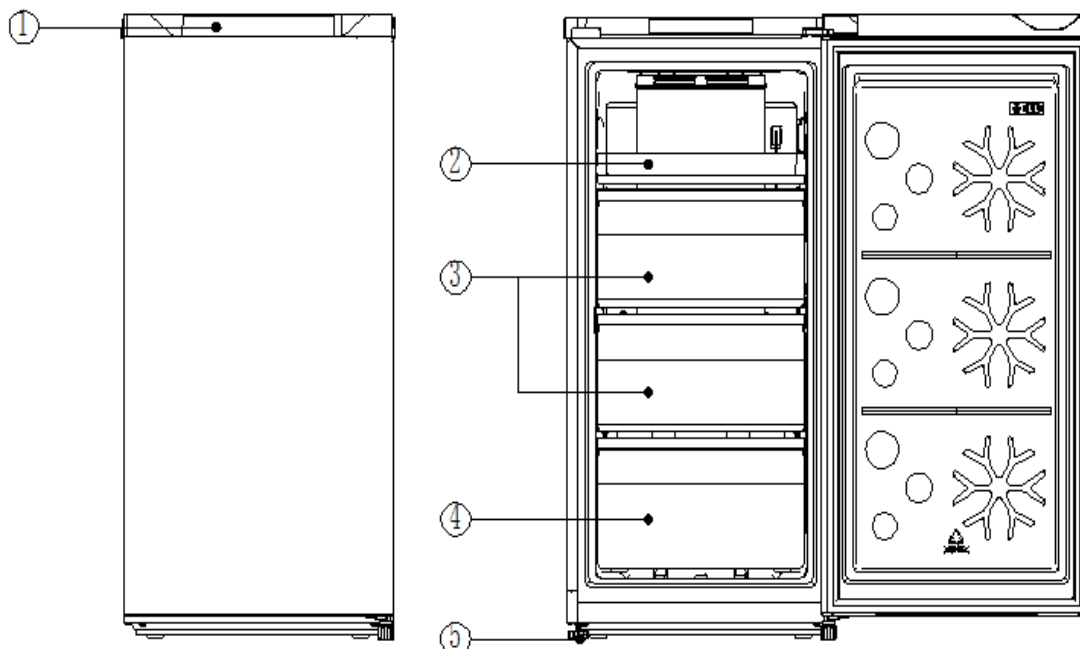


# PART NAMES AND LOCATIONS



No	Description
1	Operation panel
2	Trays
3	Freezer drawer
4	Freezer drawer
5	Leveling feet

**IN ACCESSORY BAG:** USER MANUAL, WARRANTY CARD

**As the manufacturer holds the authority to redesign or modify its products without notice: Any modifications or upgrades of our products will result in this Refrigerator varying slightly from this manual but the functionality will remain the same to that as set out within this manual.**

# IMPORTANT SAFETY INSTRUCTIONS



**Follow these basic precautions to reduce the risk of fire, electrical shock hazards or injury when operating the Refrigerator:**

- **This product has been designed for using in a normal domestic environment. It is not intended for commercial use which will avoid warranty, such as supermarket, food shop, pharmacy, commercial kitchen & etc.**
- Persons with lack of experience and knowledge, reduced physical or mental capabilities, need to be given supervision or instruction concerning use of the appliance by a person responsible for their safety.
- Children should be supervised to ensure that they do not play with the appliance. Cleaning and user maintenance shall not be made by children without supervision.
- It is critical use this appliance safely. Read all instructions before operating the Refrigerator and do not attempt to repair or modify this unit in any way as it can cause harm or void the warranty.
- Please ensure all persons using this appliance are also informed and comply with the details set out within this manual and the product Terms and Conditions.
- When unpacking the appliance for the first time, keep all cardboard and plastic packaging out of reach from children.
- Report any notable defects with the appliance to Chiq or retailer as soon as it is noted. Failure to do so can result in a non-warranty claim. Keep all packaging materials in a safe location until the unit has been installed properly.
- If the supplied power cord of this unit is damaged, it must be replaced by qualify service agent or similarly qualified persons in order to avoid any risk of injury. It is recommended the power cord is situated in a safe location when operating or transporting the appliance to prevent any damage that may cause electrical shock or fire hazards.

- **DANGER or WARNING:**

**This unit is not designed for outdoor installation.**

**Service of this unit**

The installation or any service of the appliance is recommended by a qualified technician or service company.

**Ventilation Hazards**

Never clean the Refrigerator or Refrigerator parts with flammable fluids, or store gasoline or any other flammable vapors and liquids in the vicinity of this or any other Refrigerator as the gas and/or vapour can cause a fire hazard, explosion or inhalation.

**Electrical Connection**

Make certain, when installing or moving the unit that the power outlet has been connected to, has been fitted by a qualified electrician and the ground wire has been connected properly to meet the Australian Electrical Standards.

## R600a WARNINGS

NOTE: This model uses R600a flammable refrigerant in its sealed system. The following must be observed for your safety:

### R600a Refrigerant Warning

- This appliance contains 0.04 kg grams R600a refrigerant which is environmentally friendly, but flammable. It does not damage the ozone layer, nor does it increase the greenhouse effect.
  - During transportation and installation, ensure that the tubing of the refrigerant circuit is not damaged.
  - Leaking refrigerant can ignite and may damage the eyes.
  - In the event any damage does occur, avoid exposure to open fires and any device which creates a spark. Disconnect the appliance from the mains power.
  - Thoroughly ventilate the room in which the appliance is located for several minutes.
  - Notify Customer Service for necessary action and advice.
  - The room for installing the appliance must be at least 1 cubic metre per 8 grams of refrigerant. The refrigerant quantity contained in this appliance is listed above in grams; it is also noted on the Rating Plate of the appliance.
- \* Do not store explosive substances such as aerosol cans with a flammable propellant in this appliance.

**It is hazardous for anyone other than an Authorised Service Person to carry out servicing or repairs to this appliance. In Queensland the authorized person must hold a Gas Work Authorisation for hydrocarbon refrigerants, before carrying out servicing or repairs which involve the removal of covers.**

1. Keep ventilation openings, in the appliance enclosure or in the built-in structure, clear of obstruction.
2. Do not use mechanical devices or other means to accelerate the defrosting process, other than those recommended by the manufacturer.
3. Do not damage the refrigerant circuit.
4. Do not use electrical appliances inside the food storage compartments of the appliance, unless they are of the type recommended by the manufacturer.
5. Do not store explosive substances such as aerosol cans with a flammable propellant in the appliance.

### Disposal

The environment and personal safety must be considered when disposing of this appliance. Please ensure the appliance is taken to a recycle center for safe recycling. DO NOT dispose of the appliance in land fill as the insulation and refrigerant gas contained in these appliances are flammable.

## Product Features

---

This refrigerator has six operating modes: "Freeze", "Beverage", "Freeze", "Chill", "Soft freeze" and "Wine". Please select the right operating mode after power-on, to avoid food damage.

No.	Function	Temp Zone	Descriptions
1	Freeze	-16~-24℃	Used for the storage of frozen foods;
2	Fridge	02~08℃	Used for the daily fresh food storage;
3	CHILL	0℃	Used for the storage of delicacies such as tea, etc.
4	Soft freeze	-03/-05/-07/-09/-11/-13℃	Used for the storage of meat for short period of time
5	Cellar	05~15℃	Used for the storage of wine

### ★Computer control

Adopting the electronic temperature control mode, the refrigerator is designed with a LED display screen, by which the temperature and working parameters can be managed and set.

### ★Inverter technology

Integrated with precise frequency conversion, noise reduction, energy saving, precise temperature control and other technologies, the refrigerator boasts of superior performances.

Furthermore, working efficiency of the inverter compressor can be automatically adjusted according to the ambient temperature and the set temperature and keep the fridge-freezer operating in its optimal state.

### ★Green technology

The freon-free refrigerant and foaming insulation material are used for the refrigerator, causing no damage to the ozone layer and having a very small impact on the global warming, so it is an environmentally friendly product.

### ★More user-friendly designs

Such functions as wide working voltage range, automatic temperature control, power-cut memory, power-on delay, automatic alarm, fast freezing, and quick cooling, etc. are available.

# STALLATION INSTRUCTIONS

## Before Using the Refrigerator

- Remove the exterior and interior packing.
- Before connecting the Refrigerator to a power source, let the unit stand upright for approximately 4 hours to mitigate the possibility of a malfunction in the cooling system from improper handling during transportation.
- Clean the interior surface with warm water using a soft cloth.

## Installing the Refrigerator

- This appliance is designed to be free standing only, and should not be recessed or built-in.

W	D	H	A	B	C(°)	E	F
475	565	977	766	997	130	50	100

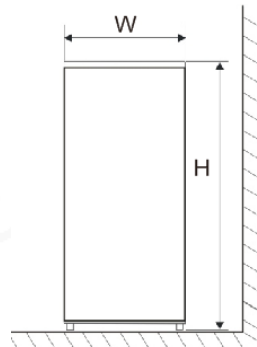


Fig. 1

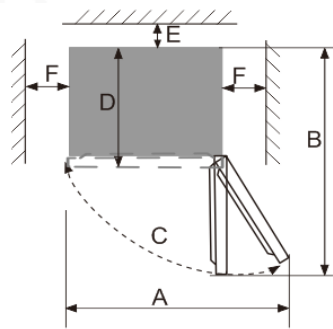


Fig. 2

Note: Figure 1, Figure 2 only illustrate the space demand of the product.

- **Allow at least 5cm of space between the back and sides of the Refrigerator to allow proper air ventilation.** Insufficient space will result in cooling and working life issue and voiding warranty.
- Place the Refrigerator on a **leveled/even** floor surface that is strong enough to support the weight of the Refrigerator when it is fully loaded to prevent vibrations.
- **Place the Refrigerator on a concrete, tile floor or waterproof floor is recommended. The fridge will produce defrost water or condensation moisture, it might cause water damage in some extreme circumstances.**
- **The front feet can be adjusted to level the appliance properly.** Adjust the two front feet to keep the Refrigerator leveled or elevated.
- Situate the Refrigerator away from direct sunlight and sources of direct heat (stove, heater, radiator, etc.). Direct sunlight may also affect the acrylic coating and heat sources may cause an increase power consumption.
- This unit is not designed for outside installation.
- Avoid situating the Refrigerator in moist OR **pest infestation** areas.
- Plug the Refrigerator into dedicated, properly installed-grounded wall outlet. Do not

under any circumstances cut or remove the third (ground) prong from the power cord. Any questions concerning power and/or grounding should be directed toward a certified electrician or an authorized service center.

- After plugging the appliance into a wall outlet, turn the unit on and allow the unit to cool down for 4-6 hours before placing food in the Refrigerator.
- Do not place heavy items on the top of this appliance.

## **ENERGY SAVING TIPS**

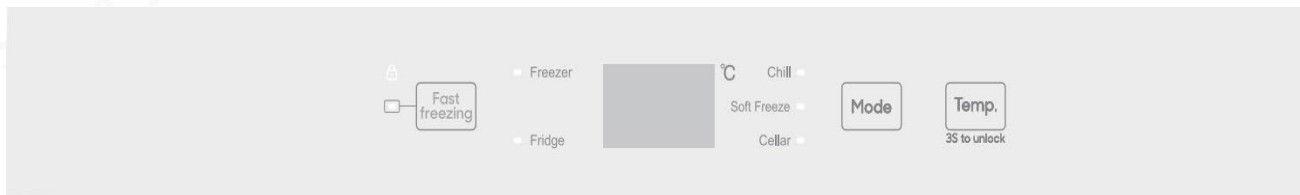
---

- Allow hot foods to cool to room temperature before placing in the Refrigerator. Overloading the Refrigerator forces the compressor to work harder. Foods that freeze too slowly may lose quality, or spoil.
- Be sure to wrap foods properly, and wipe containers dry before placing them in the Refrigerator. This cuts down on frost build-up inside the Refrigerator.
- Organize and label food to reduce door openings and extended searches. Remove as many items as needed at one time, and close the door as soon as possible.

# OPERATING INSTRUCTIONS

## Function & Setting

The display panel is on the top cover, the following picture will show the display symbols and functions.



When the refrigerator is powered on for the first time, the buzzer gives a beep, and all icons will be on for 2s. If there is no key operation within 3 minutes, the display screen will automatically light off, with keys locked. When the display is off, it will light up if any key press.

### ❖ Function setting

To meet different use needs, Five operating modes are designed with this refrigerator, i.e.: "Freeze", "Fridge", "Chill", "Soft freeze", "Cellar". According to the actual storage needs, users can press the "Mode" key to select the operating mode (the indicator light of the current mode turns off while that of the next mode turns on with each response of the "Mode" key). The operating modes will cycle in the following sequence: "Freeze" → "Fridge" → "Chill" → "Soft freeze" → "Cellar" → "Freeze"

Temperature range under each function mode:

- When the 'Fridge' function is enabled, the temperature range is 4~8°C, which can be adjusted by pressing the "Temp." key. If no key operation is performed within 5 seconds, the setting will take effect.
- When the 'Freeze' function is enabled, the temperature range is -16~-24°C, which can be adjusted by pressing the "Temp." key. If no key operation is performed within 5 seconds, the setting will take effect.
- When the 'Chill' function is enabled, the temperature will be controlled at 0°C, which is subject to no change.
- When the 'Soft Freeze' function is enabled, the temperature range is -3~-13°C,

which can be adjusted by pressing the “Temp.” key. After the setting, If no key operation is performed within 5 seconds, the setting will take effect.

- e. When the ‘Cellar’ function is enabled, the temperature range is 5~15°C, which can be adjusted by pressing the “Temp.” key. After the setting, If no key operation is performed within 5 seconds, the setting will take effect.
- f. Under the “Freeze” mode, press the “Fast-freeze” key, then the “Fast-freeze” function gets activated. When the ‘Fast-Freeze’ function is enabled, the temperature will be controlled at -32°C, which is subject to no change. After running for 26 hours, the fast-freeze function will be disabled automatically. When the “Fast-freeze” function is active, press the “Fast-freeze” key again, the function can be disabled.

### ❖ **Child Lock function**

If no key operation within 3 minutes, the Child Lock function will be enabled automatically. The lock symbol lights up on display.

When the Child Lock function is enabled, the temperature and function can't be changed to prevent maloperation.

#### **Exit or Enable the Child Lock function**

Press and hold the “Temp.” key for 3s to exit the “Child Lock” function.

### **Notes**

The number on the display only shows the setting temperature which might vary to the exact temperature inside the unit.

Please note different sections of refrigerator compartment may be warmer or cooler than others – typically the back wall and bottom lowest shelf will be the coolest, the top front near the door will be the warmest. To avoid frost bite, please don't put raw vegetables too close to the coolest area.

### ❖ **Door open alarm**

If any door is opened for more than 3 minutes, buzzer alarm will be continuously beeping. It can be stopped by pressing any key button, but will be restored after 3 minutes if the door keeps opening.

The alarm will stop when the doors are closed properly.

#### ❖ **Power cut memory**

In the case of power failure, the refrigerator will maintain the previous setting when the power supply is restored.

#### ❖ **Power-on delay**

In order to protect the compressor from being damaged in the case of short-time power failure (i.e., less than 5 minutes), the compressor will not be started immediately after it is powered on. But it will restart after power comes back on for more than 5 minutes.

#### ❖ **Over-temperature alarm (only after power outage)**

When the refrigerator system is powered on, if the freezer sensor temperature is higher than  $-10^{\circ}\text{C}$ , digits of the freezer zone get flickering on the display. The freezer temperature can be displayed when any key is pressed, and the normal display will be restored when any key is pressed again or after 10s.

#### ❖ **Fault alarm**

In case E0, E1, E2, EH, or EC is displayed on the display panel, it indicates fault with the refrigerator. Please contact CHIQ service Centre for a service call.

#### ❖ **Temperature setting**

When the set temperature is higher than the ambient temperature, the refrigerator may not start up.

## **GENERAL CARE AND MAINTENANCE**

---

### **Cleaning the Refrigerator**

- Upon installation of your new appliance, it is recommended that it be cleaned thoroughly and properly maintained thereafter.
- Turn off the Refrigerator and then unplug the unit from the wall outlet.
- Remove all food content before washing the inside with a damp cloth soaked in lukewarm water and dishwasher liquid. **Don't use any chemical detergent which might damage coating of the Refrigerator.**
- Be sure to keep the door gasket (seal) clean to keep the unit running efficiently as

improper cleaning can cause the seal to dislodge and tear.

- Dry the interior and exterior with a soft cloth.

## **Vacation Time**

- Turn off the Refrigerator first and then unplug the unit from the power point.
- Remove all food.
- Clean the Refrigerator.
- Leave the lid open slightly to avoid possible formation of condensation, mold, or odors.
- Use extreme caution in the case of children. The unit should not be accessible to child's play.
- **Short vacations:** Leave the Refrigerator operating during vacations of less than three weeks.
- **Long vacations:** If the appliance will not be used for several months, remove all food and unplug the power cord. Clean and dry the interior thoroughly. To prevent odour and mold growth, leave the door open slightly: blocking it open if necessary.

## **Repositioning and Relocating the Refrigerator**

- Unplug the power cord from the wall outlet.
- Remove all the food and drinks.
- Securely tape down all loose items inside your Refrigerator.
- Tape the doors to be closed securely.
- It is recommended that the Refrigerator stays in the upright position during transportation. But if it is laid down for transport purpose, please lift it up immediately after the job is done. Please wait for at least 24 hours before putting the power.

# TROUBLESHOOTING GUIDE

Problem	Solution
<b>Completely non-refrigeration</b>	<ul style="list-style-type: none"> <li>➤ Re-plug.</li> <li>➤ Opening the door and checking whether the lamp is lit.</li> </ul>
<b>Abnormal noise</b>	<ul style="list-style-type: none"> <li>➤ Adjusting refrigerator's adjustable feet.</li> <li>➤ Off the wall.</li> </ul>
<b>Poor refrigerating efficiency</b>	<ul style="list-style-type: none"> <li>➤ Putting food into refrigerator when hot food becomes cool.</li> <li>➤ Checking and closing the door.</li> <li>➤ Removing the refrigerator from the heat source.</li> <li>➤ Emptying the distance to maintain good ventilation.</li> <li>➤ Setting to the appropriate temperature.</li> </ul>
<b>•Peculiar smell in refrigerator</b>	<ul style="list-style-type: none"> <li>➤ Throwing away spoiled food.</li> <li>➤ Cleaning refrigerator.</li> <li>➤ Packing food of strong flavors.</li> </ul>
<b>No key response</b>	<ul style="list-style-type: none"> <li>➤ Press and hold the "Temp." key for 3s to unlock the keys first. (See the "child lock" function for details)</li> </ul>
<b>Operating mode or temperature not adjustable</b>	<ul style="list-style-type: none"> <li>➤ After exiting the special function, set the temperature (see the Function section for details)</li> </ul>
<b>Digital display keeps flashing</b>	<ul style="list-style-type: none"> <li>➤ Press any key to lift the alarm (see the overtemperature alarm function for details), and check whether the items stored inside get spoiled.</li> </ul>
<b>The refrigerator internal temperature cannot be overheated or undercooled.</b>	<ul style="list-style-type: none"> <li>➤ Please refer to the Function section for temperature setting of each working mode.</li> </ul>
<b>Heating on the refrigerator left and right sides</b>	<ul style="list-style-type: none"> <li>➤ It is normal that the temperature of the side plates is higher.</li> </ul>
<b>Display panel or light Off</b>	<ul style="list-style-type: none"> <li>➤ Insert the power cord plug securely into the socket.</li> </ul>
<b>The refrigerator door cannot be closed properly</b>	<ul style="list-style-type: none"> <li>➤ Do not place too much food inside.</li> <li>➤ Be sure to place the refrigerator stably.</li> </ul>

**For any enquiries, please call the CHiQ Customer care on: 1300 796 688**